

November 2, 2004

VOTE FOR A CHANGE

Income • Health Care • Tuition

VOTER GUIDE

INSIDE

Voting Basics 2

Voting at the Polls

Voting by Mail

Common Questions Definitions

Who's Running 4

Meet the Candidates

How to Vote 7

The Systems: Punchcard, Oval, Arrow, Touchscreen



P.O. Box 31151
Seattle, WA 98103
206.694.6794, telephone
206.694.6777, facsimile
1.866.789.7726, toll-free
www.povertyaction.org

I am committing to vote this year.

I cannot afford to sit out this election—there's too much at stake for me and my family. *We have been struggling to make it. Jacob and I have been searching for jobs that pay enough to support our family. Most jobs don't pay enough to keep up with the cost of renting our apartment, buying groceries, affording health care and other necessities. Taking care of my family is my number one priority. It should be the priority of our elected officials as well.*

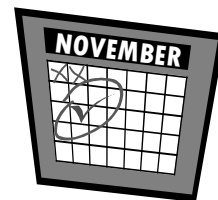


*A few months ago, **Poverty Action** volunteers came to my door asking if I'd make a commitment to vote this November. I never thought of my vote as making a difference, but right now I have too much to lose if I don't. I hope you join me in voting on Tuesday, November 2nd.*

—**Dani Brust**

here with her partner, Jacob, and daughter, Dallas, 10, of Auburn, Washington

MARK YOUR CALENDAR AND GET OUT TO VOTE!



Friday, October 15

Absentee ballots mailed to registered voters

Monday, October 18

Last day to register to vote in person (at your County Auditor's office)

Tuesday, November 2

ELECTION DAY

Polls are open 7AM–8PM

Absentee ballots must be postmarked on or before Election Day in order to be counted.

YOU CAN TAKE THIS GUIDE WITH YOU WHEN YOU VOTE

Letter from the Director

Dear Voter,

On November 2nd, Bill Gates gets one vote and so do you. In the voting booth we are all equal.

Outside the voting booth our state has grown more unequal, with the middle class shrinking and more people struggling to make it. Yet few politicians are doing something to change that.

Poverty Action is an organization of thousands of people around Washington working to make sure your elected representatives in the state capitol are helping you better meet your basic needs and have opportunities to get ahead.

Our volunteers have been out in your neighborhood talking to people about the importance of voting. By voting, you are doing the one thing that you, as an individual, can do that gives you equal power with anyone else, and as a result you have the ability to change the way things are.

We have asked candidates what they would do to help you better meet your needs and printed their answers in this guide. We have also included basic things you need to know to vote.

I hope you find this guide helpful. If you have any questions or would like to get involved with Poverty Action, please give us a call toll-free at 1-866-789-7726, or email us at vote@povertyaction.org.

Voting makes your concerns matter to your elected representatives. Don't sit this one out, it's a quick and simple way to make your voice heard.

Sincerely,



Aiko Schaefer
Director, Poverty Action Network



Voting Basics

What You Need to Know

In order to vote, you must be:

- ✓ A citizen of the United States,
- ✓ 18 years of age or older,
- ✓ A resident of Washington state,
- ✓ A registered voter.

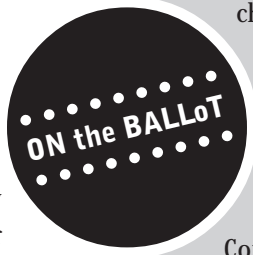
Voting at the Polls

If you go to the polls to vote, make sure you find out your polling location before Election Day. You can find your polling location on your voter registration card, or you can check on the county auditor's website or contact them by phone (see page 7 for a list of numbers). Polling places typically are stationed at churches or schools. Election notices are published in local newspapers naming the polling place for each precinct.

Voting by Mail

If you are an absentee voter, that means that you receive your ballot in the mail approximately 3 weeks before Election Day. Make sure you read the instructions on how to fill out your ballot. You can mail your ballot in any time before the election, or drop it off at the polls on Election Day. If you lose your ballot or didn't receive it, you can still vote. Go to the polls and ask for a "provisional ballot".

**Your ballot must be
postmarked on or before
Election Day,
November 2, 2004.**



Common Questions

- 1. Do I have to vote on everything on the ballot?** No, you can choose to vote only on the candidates or issues you choose. For any candidate or issue you are undecided on, you may leave your choice blank.
- 2. Do I have to choose a political party to vote in the election?** No, you do not have to choose a political party to vote in the General Election.
- 3. Do I have to vote at my assigned polling place?** It is best to vote at your assigned polling place. However, if you cannot make it to your polling place (perhaps you are at work and it is too far to make it before closing) you can vote at any polling place by asking for a “provisional ballot”. Let the poll worker know that you are assigned to a different polling place.

Definitions

- ABSENTEE VOTING:** A way of voting that allows the voter to receive their ballot in the mail before the election so that they can vote from home.
- BALLOT:** A sheet of paper or a card used to cast a vote.
- CANDIDATE:** A person who seeks to be elected for an office.
- INCUMBENT:** The person who already holds the office.
- INITIATIVE:** The right and procedure by which citizens can propose a law by gathering signatures on a petition in order to propose it to the voters.
- NONPARTISAN:** Free from political party association or bias.
- POLL WORKER:** A person whose job is to assist voters at the polls.
- POLLING PLACE/POLLS:** The place you go to vote.
- PRECINCT:** An election district of a city or town.
- PROVISIONAL BALLOT:** A temporary ballot used for special circumstances. For example, you would vote on a provisional ballot if you vote at a precinct other than your assigned one; if your name does not appear on the list of voters but you are registered to vote; or if you are an absentee voter, but decide to go to the polls to vote.
- VOTER:** A person who expresses choice for a candidate through the process of marking a ballot.

PRESIDENT	4-year term
Chief representative of the United States. Commander in chief of the armed forces. Oversees the U.S. Congress.	
VICE PRESIDENT	4-year term
Ranked immediately below the President. May serve in President's place under certain circumstances. President of the U.S. Senate.	
U.S. SENATOR	6-year term
Member of the upper legislative house of the U.S. Congress. Each state has two Senators serving in Washington, DC.	
U.S. REPRESENTATIVE	2 year term
Member of the lower legislative house of the U.S. Congress. There's one representative per Congressional District within the state serving in Washington, DC.	
GOVERNOR	4-year term
Oversees the State Legislature and ensures that state laws are enforced. Has final approval of whether a bill becomes a law.	
LIEUTENANT GOVERNOR	4-year term
Acts as President of the State Senate. First in line to assume the role of Governor, acts as governor when Governor is out of state.	
ATTORNEY GENERAL	4-year term
The state's chief lawyer. Provides legal advice to executive officials, legislators and county prosecuting attorneys. Serves to protect consumers and defend state laws.	
SECRETARY OF STATE	4-year term
The state's chief election officer, chief corporations officer, and supervisor of the State Archives.	
STATE AUDITOR	4-year term
Reviews and inspects all public accounts. Independently serves the citizens of Washington by promoting accountability, fiscal integrity and openness in state and local government.	
INSURANCE COMMISSIONER	4-year term
Regulates all insurance business in Washington. Registers insurance companies that want to do business in the state and monitors the reinsurance market.	
SUPT. OF PUBLIC INSTRUCTION	4-year term
Oversees K-12 education in the state. Administers basic education programs and implements education reform.	
STATE TREASURER	4-year term
State's chief fiscal officer. Provides banking, cash management, investment, and accounting services for state government.	
COMMISSIONER OF PUBLIC LANDS	4-year term
Protects and manages state's forests, farms, commercial properties and underwater lands, as well as fish, wildlife, water.	
STATE REPRESENTATIVE	2-year term
Member of the State House in Olympia. Each of the 49 legislative districts in the state is served by two representatives.	
STATE SENATOR	4-year term
Member of the State Senate in Olympia. Each legislative district is served by one state senator.	
INITIATIVES	
Legislation introduced or enacted directly by the people.	
REFERENDUM	
A measure passed by the legislature that is put before voters for approval.	

2004

Who's RUNNING

Poverty Action sent these questions* to candidates running for offices that have the power to affect your ability to meet your basic needs and have the opportunity to prosper:

1. Three out of 4 jobs in Washington state do not pay a wage high enough to support a family. If elected, what will you do to ensure that families are able to earn enough to support themselves?
2. Over half a million people in this state cannot afford health coverage. If elected, what will you do to ensure that people living on lower incomes have health coverage?
3. Many single parents want to go back to school, but financial assistance does not match the rising cost of tuition. If elected, what will you do to help people who want a higher education be able to afford to go back to school while caring for their families' needs?

These are their answers to our questions:

U.S. SENATE



PATTY MURRAY

Democrat (incumbent)

206/286-9199

as well as the AmeriCorps program that helps students pay for college in exchange for community service. I am also working to ensure good quality, affordable child care for families who need help."

www.pattymurray.com

GEORGE NETHERCUTT, JR.

Republican

DID NOT RESPOND

J. MILLS

Libertarian

DID NOT RESPOND



MARK B. WILSON

Green

360/440-2576

"I advocate a nationwide back-to-work project. Taking 50 percent of military spending to go to developing clean renewable energy. \$200-\$300 billion a year will employ millions in good family-wage jobs that cannot be exported overseas.

"Clean energy jobs will provide states

with revenue enough to fully fund public services including universal health care for all.

"Clean energy jobs require enhanced education. That means full funding for kindergarten through college, including daycare for students' children on campus and increased teacher pay."

www.votemark.org

GOVERNOR



CHRISTINE O. GREGOIRE

Democrat

206/328-2969

"I'm from a working class family and know the importance of making ends meet. I have a detailed plan to create 250,000 new family wage jobs. My priorities include family wage jobs, education including training and retraining and affordable health care.

"We need accessible, affordable health care. We must ensure: health care for all children; the Basic Health

"I'm working to create good paying jobs through investments that build roads, bridges and other projects. I've consistently supported a meaningful increase in the minimum wage. In Washington, we are an example for the rest of the country with the highest minimum wage of \$7.16 an hour, indexed to inflation.

"I know that the rising costs of health care is one of the most critical issues facing working families. I have supported legislation to increase funds for Medicaid programs, expand health insurance for children, and protect funding for migrant and community health centers and programs that coordinate care for the uninsured.

"I will continue to fight to expand access to higher education. I support expanding eligibility for financial aid

Plan is available for the low income uninsured; and that employers can provide coverage for employees.

"I will advocate for tuition and financial aid levels so that the doors to education are open and affordable to all Washingtonians. We must also expand capacity at our community and technical colleges, which offer increased options and flexibility for single parents."

www.gregoire2004.com

DINO ROSSI
Republican

DID NOT RESPOND

RUTH BENNETT
Libertarian

DID NOT RESPOND

LT. GOVERNOR

BRAD OWEN
Democrat

DID NOT RESPOND

JIM WEIST
Republican

DID NOT RESPOND

JOCELYN LANGLOIS
Libertarian

DID NOT RESPOND



BERN HAGGERTY

Green

360/714-1191

"I will fight for statewide living wage- at least \$10.50 per hour-, and as President of the Senate I will work for a state budget that insures public funding for the basic needs of families, including unrestricted funding

for every eligible Head Start participant.

"I will use the Office of Lieutenant Governor to advocate, by all legal means, to replace our discriminatory, privately funded health care system with a publicly-owned universal health care system. No premiums. No deductibles. Just health care.

"As President of the Senate, I will use the Senate budgeting process to fight for our right to a free, public education from cradle to grave. I will seek legislation tying any university or community college tuition increase to an equal or greater increase in state appropriations."

www.votehaggerty.us

SECRETARY OF STATE

Secretary of state candidates were asked different questions than those asked of candidates for other offices:

1. If elected, what will you do to guarantee accuracy and accountability in Washington's voting and election system?
2. If elected, what will you do to reduce barriers to voting faced by people with low incomes, disabilities and ex-convictions?



LAURA RUDERMAN

Democrat

425/821-4721

"With new technologies come new challenges. That's why my top priority is a Voter's Bill of Rights that guarantees every vote is counted - and counted correctly.

"I'll require that every electronic voting machine produce a voter-verifiable paper trail, and that voting machine companies remain neutral in elections.

"We must increase voter participation. When people vote, they vote for better schools, affordable health care, and protections for civil rights. I will investigate each and every allegation of voter intimidation, and see that those guilty of this crime are punished to the fullest extent of the law."

www.lauraruderman.com



SAM REED

Republican
(incumbent)

360/943-0575

"We have a Certification and Training Program for election administrators in the state. In Florida, they mainly had a people problem.

"I adopted rules (that have the effect of law) regarding electronic voting. They require a paper trail by 2006, audits of vote counts by sampling precincts, testing of the equipment before, during and after elections, and no networking.

"By making voter registration available in nontraditional locations. By making sure that counties have handicapped accessible polling sites. To accomplish that, I've created a grant program for the counties and will be distributing \$5 million immediately and more in the long run.

"For ex-felons, I am working with the County Clerks and courts to make sure counties get proper notification of felons having served their sentences and then expediting the restoration of their rights."

www.samreed.org

JACQUELINE PASSEY
Libertarian

DID NOT RESPOND

* Because we are a charitable nonprofit, we are restricted from asking candidates their positions on specific pieces of legislation or policy.

U.S. CONGRESS 8th Congressional Dist.



**DAVE
ROSS**

Democrat

425/454-1320

"Enforce laws that protect the right to unionize. Promote legalization of foreign workers so that fear of deportation does not depress wage rates. Focus federal "nation-building" efforts on our infrastructure here, not just overseas.

"I've proposed a system that would allow anyone to use a credit card for medical purposes, with a portion of the charge forgiven (by the government.) according to income. This would involve substantial federal reimbursement for low-income patients.

"I would need more information on the number of single parents who qualify for college to be able to gauge the cost of any aid program. In any case, my priority will be to point out that election day is the one day when the poor have as much power as the rich...and it is foolish to think that vote doesn't count."

www.daveross.org

DAVE REICHERT
Republican

DID NOT RESPOND

SPENCER GARRETT
Libertarian

DID NOT RESPOND

U.S. CONGRESS 9th Congressional Dist.



**ADAM
SMITH**

Democrat

253/835-4440

"I will oppose tax cuts for the rich, and support investments in infrastructure and worker training and education, investments that would in turn create good-paying jobs that support families. Finally, I support an increase in the minimum wage, and will continue to support efforts to pay workers what they deserve.

"Our country's health care system is near-crisis level, and something needs to be done to address the problem. We need universal health care in this country, so the 44 million Americans currently without health insurance are paying into the system, and therefore lowering insurance costs for those seeking insurance.

"I gained firsthand knowledge of the importance of college loans and grants during college, and will continue to work to ensure the strong tradition of higher education is available for all Washingtonians.

"I support increased funding for child care programs, allowing parents the flexibility of continuing their education."

www.electadamsmith.com



**PAUL J.
LORD**

Republican

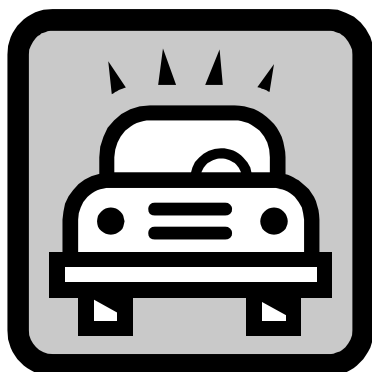
360/923-5569

"Your government must reward businesses that keep high paying jobs in the area, and penalize corporations for leaving our state and country. Too many times, it is just the opposite. We must stand up for companies like Boeing, and keep our jobs home.

"We must work together to reduce costs in health care. Politicians need to help reduce costs, rather than discuss who should pay for it. Too often we pit doctor against patient, employee vs. employer, while we fall further and further behind.

"My mother faced this same situation when I was 4 years old. The same opportunity that allowed her to get her accounting degree should be available to everyone. I did learn not to say "food stamps" in public, however (my older brother would smack me).

www.pauljlord.com



NEED A RIDE TO THE POLLS?

Poverty Action is coordinating volunteer drivers to give S. King County voters a ride to the polls on Tuesday, November 2nd. Please phone us toll-free at 1-866-789-7726 or email vote@povertyaction.org for more information.

STATE HOUSE

47th Legislative Dist.

POSITION 1



**GEOFF
SIMPSON**

**Democrat
(incumbent)**

253/630-3498

“The state should provide affordable and comprehensive health care coverage for all Washington residents, provide ample access to our institutes of higher education, create budget priorities that benefit poor and working families, end the offshore outsourcing of public jobs and services, and demand real corporate accountability.

“I will continue to work to implement affordable and comprehensive health care coverage for all of Washington’s citizens.

“One obstacle preventing single parents from obtaining higher education (aside from the rising cost of tuition) is the lack of ability to afford child care. The state should implement policies that assist financially challenged single parents in getting the child care they need to be able to attend college or technical school.”

www.votesimpson.com



**STEVE
ALTICK**

Republican

253/631-1930

“Washington has one of the highest minimum wages now; most minimum wage earners are first time workers, and teenagers. The solution is to get our economy moving by encouraging business growth, thus providing more

jobs and higher wages. Mandates and controls have caused our state to become unfriendly to business growth.

“Health care is and will be an important issue in the 2005 Legislature. I believe we must create the environment for more competition among insurance companies and providers, and reduce or do away with many of the mandates and controls that force health care to be so expensive. Tort reform is also a part of the solution. I do support a “safety net” for those without resources such as Basic Health.

“We need to be committed to creating opportunities for higher education for all our citizens, and that means keeping tuition at affordable levels. I do not believe higher education is a “right” to be given by government to any part of the population; however, it is an opportunity for government to create conditions that allow citizens to attend.”

www.stevealtick.info

DUANE GRINDSTAFF
Libertarian

DID NOT RESPOND

POSITION 2



**PAT
SULLIVAN**

Democrat

253/740-6772

“We need to audit all tax incentives offered to industries in our state to ensure they are producing the jobs that they are intended to produce. Incentives which are not providing family wage jobs should be eliminated. We need to focus tax incentives on industries which produce family wage jobs.

“We need to increase the available slots covered by the Basic Health Plan. We need to work with busi-

nesses in our state to increase the pooling potential and cost savings for employee health care coverage. We need to follow-up on the King County Task Force recommendations for comprehensive reform.

“We simply must provide adequate financial assistance for those who are unable to afford a higher education, but are looking to earn a degree and better provide for themselves and their families. This is not only an important investment in their future, it a worthwhile investment for our state.”

www.votepatsullivan.com

JACK CAIRNES
Republican (incumbent)

DID NOT RESPOND

KELLEY GUTHRIDGE
Libertarian

DID NOT RESPOND

CITY OF AUBURN

Proposition No. 1

LEVY FOR LOCAL STREET IMPROVEMENT PROGRAM

The City Council of the City of Auburn, Washington adopted Ordinance No. 5864 concerning approval of regular property tax limits to fund street improvements. This proposition would authorize a 2005 regular property tax rate of \$2.88/\$1,000 of assessed value, the same as 2004, and set the limit factor for computing the maximum levy amount in 2006-2010 at 103%. The estimated levy rate in 2010 is expected to decrease to approximately \$2.76/\$1,000 and that levy would be used to compute future levy limits under RCW 84.55. Revenues in excess of the RCW 84.55.0101 limits would be dedicated solely to a local street program. Should this proposition be approved?

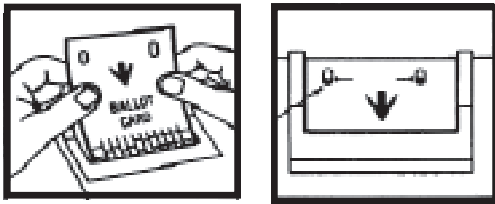
Vote Yes or No.

How to VOTE

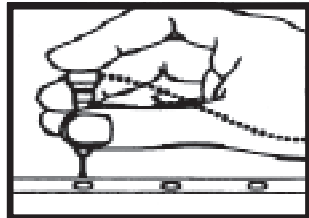
What kind of ballot are looking at? Depending on where you live, there are different ways you'll fill out a ballot. **All are easy to use.** Find your county in the gray box at right then read below to see how it works. Know what to expect before you step up to vote.

PUNCHCARD

Using both hands, insert the ballot card all the way into the voting unit. Be sure the two slots in the top stub of your ballot card fit down over the two red pins.

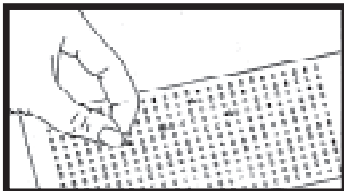


Using the Official Ballot pages, find the voting number for your choice and punch that same number in the voting unit. Hold the punch device straight up and down when punching. Do not use a pen or pencil on voting unit.



To write in a name, you must write in the name of a valid write-in candidate and the office on the gray ballot envelope.

After voting, withdraw the ballot card. Inspect it to be sure all holes are cleanly and completely punched out. Remove any loose chads as illustrated.

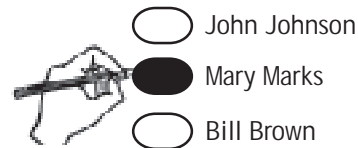


Insert ballot card into gray ballot envelope and return to the Poll Worker. If you make a mistake in marking your ballot, another ballot can be issued by returning the spoiled one to the Poll Worker.

OPTICAL SCAN: OVAL

Use only the pencil provided to mark your ballot.

To vote you must blacken the oval completely!



To write in a name, you must blacken the oval and write in the name of a valid write-in candidate on the line provided.



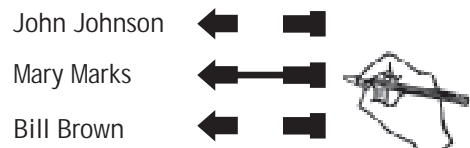
When you are finished, check your ballot for accuracy and feed the completed ballot into the machine.

Do not attempt to erase or cross out a vote. If you make a mistake in marking your ballot, another ballot can be issued by returning the spoiled one to the poll worker.

OPTICAL SCAN: ARROW

Use only the marking pen provided or a #2 pencil to mark your ballot.

To vote you must complete the arrow.

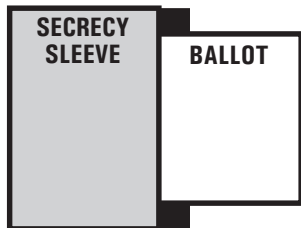
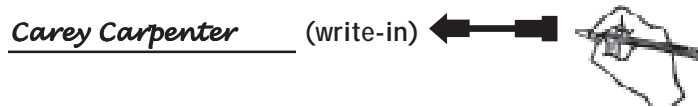


Thanks to State of Idaho Secretary of State for permission to reprint Voting Instructions.



Know what kind of system to expect.
Look up your county below and contact them if you have any questions.

To write in a name, you must complete the arrow and write in the name of a valid write-in candidate on the line provided.



Place the ballot in the secrecy sleeve. Drop the ballot, in the secrecy sleeve, into the ballot box.

Do not attempt to erase or cross out a vote. If you make a mistake in marking your ballot, another ballot can be issued by returning the spoiled one to the poll worker.

TOUCHSCREEN MONITOR

When you sign in at the polls, you will receive a plastic voter card from the poll worker.



Insert your card into the machine and follow the instructions on how to vote.

To make a selection, touch the screen on the box for each candidate or issue you wish to vote for.

Review the tallied ballot results for accuracy before ejecting card. Once card is ejected, give it to a poll worker.

PLEASE NOTE: In all voting systems, you cannot vote for a candidate whose name appears on the ballot AND write in a candidate under the same office title. This is an overvote and neither vote will count.

STATEWIDE VOTER HOTLINE: 1-800-448-8881

COUNTY	SYSTEM	INFOLINE
Adams	Optical Scan Oval	509.659.3249
Asotin	Punchcard	509.243.2084
Benton	Punchcard	509.736.3085
Chelan	Optical Scan Oval	509.667.6808
Clallam	Punchcard	360.417.2221
Clark	Punchcard	360.397.2345
Columbia	Optical Scan Oval	509.382.4541
Cowlitz	Optical Scan Oval	360.557.3002
Douglas	Optical Scan Oval	509.745.8527
Ferry	Optical Scan Oval	509.775.5208
Franklin	Punchcard	509.545.3538
Garfield	Optical Scan Oval	509.843.1411
Grant	Optical Scan Oval	509.754.2011
Grays Harbor	Optical Scan Oval	360.249.4232
Island	Punchcard	360.240.5553
Jefferson	Optical Scan Arrow	360.385.9119
King	Optical Scan Oval	206.296.1565
Kitsap	Optical Scan Arrow	360.337.7128
Kittitas	Optical Scan Oval	509.962.7503
Klickitat	Optical Scan Oval	509.773.4001
Lewis	Punchcard	360.740.1278
Lincoln	Punchcard	509.725.4971
Mason	Punchcard	360.427.9670
Okanogan	Punchcard	509.422.7240
Pacific	Punchcard	360.875.9317
Pend Orielle	Optical Scan Oval	509.447.3185
Pierce	Optical Scan Arrow	253.798.7430
San Juan	Optical Scan Oval	360.378.3357
Skagit	Optical Scan Oval	360.336.9305
Skamania	Optical Scan Oval	509.427.9420
Snohomish	Touchscreen	425.388.3444
Spokane	Optical Scan Oval	509.477.2320
Stevens	Punchcard	509.684.7514
Thurston	Punchcard	360.786.5408
Wahkiakum	Optical Scan Oval	360.795.3219
Walla Walla	Optical Scan Oval	509.527.3204
Whatcom	Punchcard	360.676.6740
Whitman	Optical Scan Oval	509.397.6270
Yakima	*eSlate	509.574.1340

* Yakima is the only county using a new voting system, the "eSlate", from which you vote on a hand-held palm device, using a rotary dial to make your selections. For more info, contact the county elections office.

OUR MISSION

Because no one in the U.S. should be poor, we take action to eliminate the root causes of poverty.

COORDINATING BOARD

Sylvia Arthur
Community Representative
Tom Donlea
Community Representative
Jon Gould
Children's Alliance
Tony Lee
Fremont Public Association
Phillisha Manning
Community Representative
Cathy McGinty
VOICES, Spokane
Angeline Phillips
Community Representative
Michael Ramos
Community Representative
Joan Weiss
King County Labor Council,
AFL-CIO

STAFF

Mary Babington
John Dotero
Kim Justice
Aiko Schaefer
Julie Watts
Anne Yen

Statewide Poverty Action Network is a nonpartisan organization. We do not support any candidate or political party.

DON'T FORGET TO BRING IDENTIFICATION

If this is the first time you have voted and you registered using a mail-in voter registration form, when you go to the polls you **MUST** bring a form of identification that verifies your address:

Forms of identification you may use:

- ✓ Washington driver's license or state-issued photo ID
- ✓ Voter registration card



If you do not have any of the above forms of ID, ask the poll worker for a "provisional ballot" (see page 3) and you can still vote.

This information was provided by the Office of Washington's Secretary of State.

DON'T BE TURNED AWAY

If you are registered to vote and meet the qualifications to vote (see page 2), you cannot be turned away from the polls. If your name does not appear in the book at your polling place, you can ask the poll worker for a "provisional ballot". You can still vote! (RCW 29A.04.008)



Questions? Call Poverty Action toll-free at **1-866-789-7726**, email us at **vote@povertyaction.org** or visit our website: **www.povertyaction.org**



c/o Fremont Public Association
P.O. Box 31151
Seattle, WA 98103

NONPROFIT ORG
U.S. POSTAGE
PAID
SEATTLE, WA
PERMIT NO. 3057